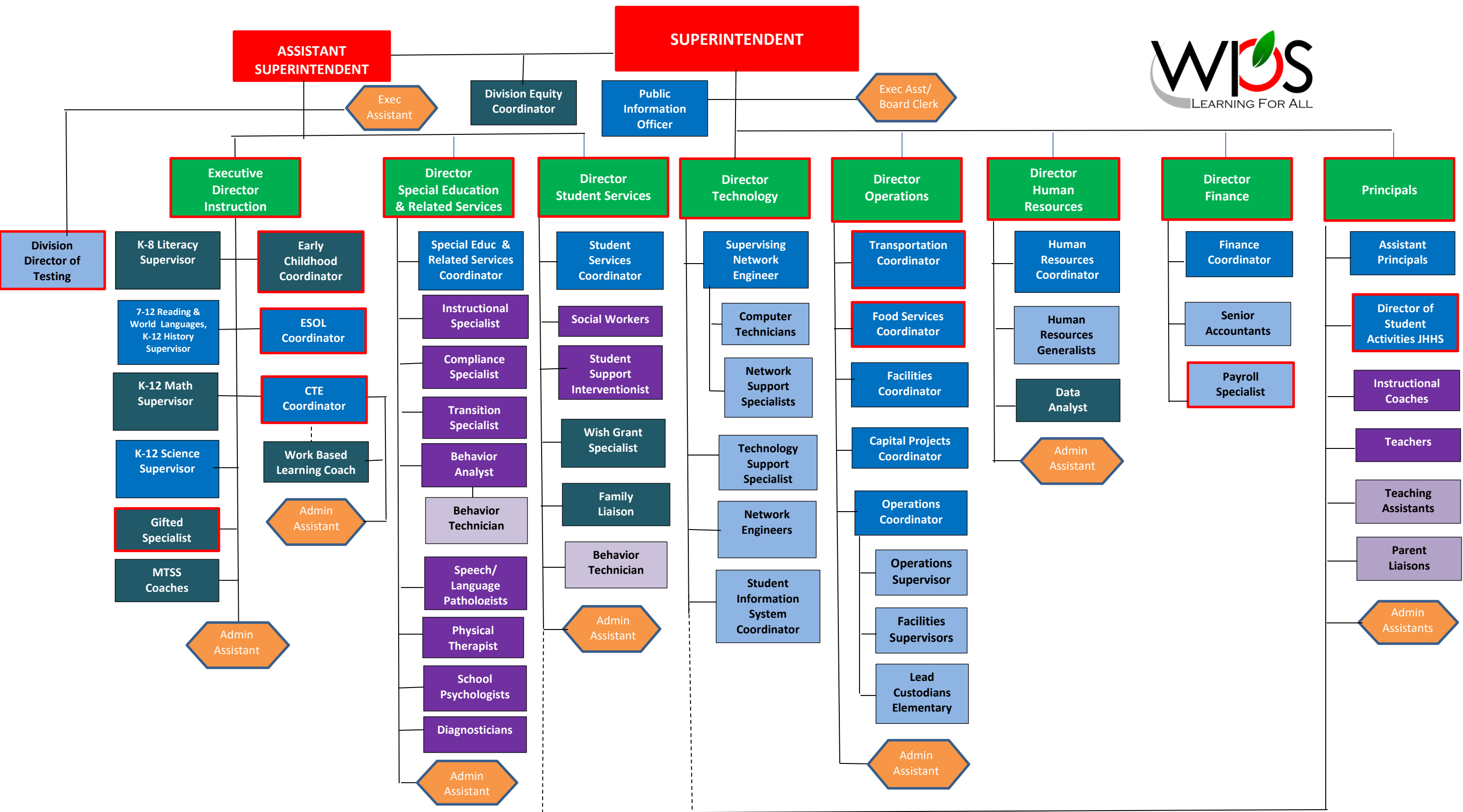


**ASSISTANT SUPERINTENDENT**

**SUPERINTENDENT**



<b>Superintendent</b>	<b>Licensed, Non-Admin</b>
<b>Admin Assistants</b>	12-mo operations support
<b>Directors/Principals</b>	School based, non-licensed
<b>APs/Coordinators/Supervisors</b>	Federal or state grant funded